

The Clevedonian

Winter 2010



In this edition

- Page 1
Society Publications
- Page 2
Chairman's Piece
Who's Hugh?
- Page 3
Group Reports
- Pages 4
Group Reports
Land Yeo Friends' Report
- Pages 5
Notice Board
- Page 6
Speakers' Corner
Broadmead Before the Shops
Marianne North - Victorian Artist
Bristol Zoo
- Page 7
Our Somme Visit 2010
- Pages 8 & 9
Civic Society Projects
- Pages 10
A Town Councillor's Month
- Page 11
Regency Villas
- Page 12
Weston Pier - Open
- Page 13
All Saints' Church @ 150
- Page 14
Military Chest
Collectors' Lot
- Page 15
Branch Line
MARLENS' Report
- Page 16
Members' Photograph Gallery
Cartoon Corner

The views expressed are those of the authors, and may or may not represent those of the Society.

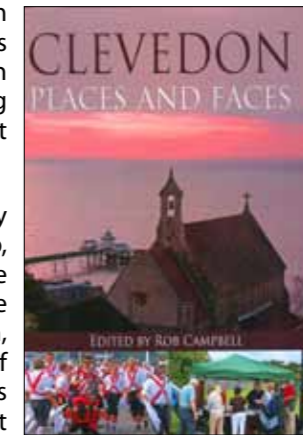
SOCIETY PUBLICATIONS

Clevedon Places and Faces Edited by Rob Campbell

The latest book from the History Group was published in October with a book stall set up during both Society meetings that month.

Again this book is edited by our prolific chairman, Rob, who wrote in the preamble on the cover, 'If you have an interest in Clevedon, its views and vistas and, of course, its people, then this book is for you. The vast majority of the images have not been published before.'

Members and friends of the Society have also contributed many of the chapters in the book, including Roy Girling, who was able to expand a previous article about the local engineer, inventor and boat racing enthusiast, Michael John (Jack) Willcocks. There is a fascinating chapter, written by Austin Davis, about the building of the Triangle Clock in 1898, with detailed diagrams of the structure of the building and the clock mechanism. Chris Stone has contributed a chapter entitled, 'Resting Places and Watering Holes.' John Penny, has written an article about the radio mast which has been such a landmark



to the south of the town since it was opened by the BBC on June 14, 1939 (just a week after I was born!). I was pleased to provide Roy Girling with some extra information and photographs to enable him to enlarge on another of his previously published articles about war-time Penicillin manufacture in Elton Road.

Not only did he edit the book but Rob Campbell also wrote several of the chapters himself, including a fascinating story about local flying man Collyns Price Pizey, an account of the heroic life of driver/nurse Rose Norton Harper and the story of Henry Edward May's courageous rescue attempt in rough seas off the main beach in 1897.

Above all, this is a picture book. It contains nearly 400 old photographs taken in and around Clevedon in the past 100 years or more. If you attended school in Clevedon during the last 50 years or were a member of a sports or theatrical group or if you took part in any of the town's post war carnivals, the chances are your face is to be found in the pages of this, the latest book to be published by our Society.

As it says on the book cover, 'It's a must for family historians and locals alike.'

Geoff Hale

The book is available to Society members at a special price of £12.00



CHAIRMAN'S PIECE

Report by Rob Campbell

I cannot believe that we are now nearing the end of our 40th Anniversary Year, maybe that's because we have been so busy. It started with the launch of our 'Blue Book' which filled the much needed gap in our knowledge about the very early period of Clevedon's history. We then came up to date with the DVD and more recently 'Places & Faces' which will I'm sure be known in the future as our 'Purple Book'. In between we had the Anniversary Dinner and of course the beautiful renovation work carried out on the Pier Copse Viewpoint. All this has been achieved with an awful lot of hard work by members of this great society.



Effort is rewarding and as I approach the end of my four year tenure as your Chairman I hope that my input has emulated the work done by my predecessors. I am certainly proud of the Society's achievements over the last 40 years and I am also proud and honoured to have played my part in recent years. May 2011 is rapidly moving towards us; Norma retires at the end of that month; what will the future bring? However I feel sure that the future of the society is in very safe hands, as Hugh Stebbing takes the Chair as of the AGM.

Anniversary 40 | Clevedon Civic Society

Finally, as we all enjoyed the talk from Gina Merrett Smith on the beautiful Victorian floral art work of Marianne North, whose collection is housed in a special gallery at Kew Gardens, Wendy and I decided to organise a trip so that we could marvel at it in person. The trip is booked for Thursday 28 April 2011 and the price is £26, which includes coach and entry to Kew and the Palace. We will be booking lunch for those who wish to eat together. Something to look forward to when the weather warms up!

This talk is reviewed on page 6

Hugh Stebbing was elected as the Civic Society's Vice Chairman at our AGM in May 2010. Hugh will be the Executive Committee's nomination to stand as Chairman at the next AGM in May 2011. We asked Hugh to send us his CV!

WHO'S HUGH?



Hugh was born 62 years ago in Walthamstow, Essex (now London...!!). He went to Forest School close to his home in South Woodford where he lived until moving a short distance to Woodford Green. By this time, in 1974, he was working in the Premises Department of Lloyds Bank having completed a degree and qualifying as a Chartered Surveyor. In 1976 Hugh and Christine were married and subsequently his career flourished alongside the births of Michelle, Joanne and Natalie.

In 1988 Hugh led the team at Lloyds Bank responsible for the development

of Canons House at Harbourside in Bristol. This assignment resulted in a family move from Woodford to Clevedon where Christine and Hugh have lived in Cambridge Road ever since. Michelle has moved to New Zealand where she trains and races horses, Joanne is completing her 7th year doing humanitarian work in Romania and is in the process of adopting seven year old Alex, an orphan, and Natalie is working in London as a midwife.

In February 2009 Hugh retired from what is now Lloyds Banking Group where he was Asset Management Director responsible for the operational property portfolio worldwide and for property aspects of various corporate mergers and disposals with which the bank was involved. He is now a director on two boards in the Southern Housing Group, a major housing association active across the south east of England and is chairman of the Investor Committee of Mayfair Capital Income Plus Fund, a commercial property investment management business.

Away from the family and work Hugh has been active in the City of London having been Master of the Worshipful Company of Chartered Surveyors, a City Livery Company, and is Chairman of the Governing Council of Clifton High School, Bristol. He enjoys fly fishing, skiing and mountaineering. Hugh is a practising Christian who worships at Christchurch where he also chairs the redevelopment project team. He is also active at Clevedon YMCA and, for the last 10 years, he, with Christine, has led an annual residential summer camp for children disadvantaged in their day-to-day lives. Hugh's other great love is his Bristol Brigand car – one of only 29 to have been made by Bristol Cars at their factory in Filton.

Clevedon Civic Society brings a new dimension to Hugh's activities and he looks forward very much to making a truly positive contribution to the important work it undertakes across the town and beyond.

Derek has seen the newsletter publication progress from a four page type written issue printed using stencils cut on his own dot matrix printer right through to a 16 page professionally printed document complete with colour photographs.

ERRATA:

In Derek's farewell letter in the last edition of *The Clevedonian*, we named the lady who did the duplicating as Mary Thomas. In fact there were two ladies; they were Mary Brueton and Kathleen Thomas.

TIME GOES BY



At the September public meeting, Derek Lilly, who has been the Society's Newsletter editor for the past 20 years, received a parting gift from the chairman, Rob Campbell.



Footpaths Group

Report by Jean Hannaford

In early summer the group planned a wide variety of walks in Clevedon and surrounding districts. The original town walks were set out in the 1970s and are in the process of being updated one by one. This gives the group the opportunity to find out how the routes have changed, or not, as the case may be. One of the walks was done in July and another in August, the latter being an annual charity walk. July also saw the group walking in Portishead.

Next **Footpaths Group** meetings:
7 March and 6 June 2011

Dolebury Warren and Brent Knoll were two destinations visited in September, giving everyone the chance to step out into the countryside. The views from both were stunning as a result of excellent weather.

In October Clevedon was again the area for walking but this time it was an updated route which proved very interesting. Later in the month the group travelled to Bristol to enjoy a bracing trek around the Downs.

In November the weather changed and our historical walk in Portishead was



Brent Knoll - 17 September 2010

cancelled due to very heavy rain. This will be rescheduled later in 2011. The Gordano Valley, Berkley and the Purton Wrecks site on the banks of the Severn Estuary are further walking venues taking the group to the end of 2010.



Local History Group

Report by Rob Campbell (Tel. 877038)

Such is a politicians life! He and his PA were extremely apologetic and by the good services of a number of members an ad hoc evening was put together and proved to be very enjoyable.

The second half of our Anniversary Year began with 'Brave Rescues in North Somerset' with me talking about some of the life saving awards in my collection. Sadly in October, Stephen Williams MP had to submit his apologies due to pressures of office, which I'm sure he never envisaged would evolve when the booking was made a year earlier.

Our now traditional 'Winter Supper' had the tables full to overflowing with delicious goodies, some of which were homemade and now served on washable plates, so we all felt very smug about doing our bit for the environment! We welcomed back Pat Hase that evening

and in her indomitable manner she had us spellbound with interesting facts and little anecdotes about Weston-super-Mare Worthies.

As the 40th Anniversary Year closes let's look back at some of the fascinating talks that we have all enjoyed and the friendly atmosphere that we have all fostered.

The programme for 2011 looks varied and interesting and definitely something to look forward to.



Conservation & Planning Group

Report by Bryan Osborne

allowing house owners to extend their homes as permitted developments.

We are considering nominations for the Society's *Environment Award for 2010* and should welcome any ideas you may have for projects, completed before 31st December 2010, that deserve recognition. These can be a new building, an extension or even landscaping that is visible to the general public.

The Royal Pier Hotel is still in a state of disrepair, even more so since the November storms played havoc with the plastic sheeting covering the scaffolding. Discussions are taking place between the developer and the pier trustees exploring options for providing toilets beneath the ramp for pier promenaders. The planning application has just been submitted at the time of writing (the end of November).

The design for the new Community Hospital on the old Kwik Save site is progressing, but we are seriously concerned that funding for this much needed development may not be readily available in the current climate to see work starting in the spring as hoped.

The Regent Hotel in Hill Road is still a blot on this attractive shopping road and we understand it may be changing hands again. The council is

having difficulty getting the owner to clear the blocked rainwater pipe, the cause of the spalling stonework.



GROUP REPORTS

Environment Group

Report by Bob Hardcastle (Tel. 871633)



The Environment Group has had a quieter few months since the completion of the Pier Copse Viewpoint but has been working behind the scenes on projects for next year.

We hope to get the public toilets in Pier Copse improved and have surveyed the existing building and are considering the best way to create a disabled toilet there. We hope to be speaking to North Somerset Council about this soon in conjunction with the hoped for development of the Royal Pier Hotel.



Clearing the Donkey Path

We completed our summer Working Party programme by clearing the Donkey Path. We start again with the Big Litter Pick on Monday 11 April 2011. This will involve the other groups in the Society. So please get the date into your new 2011 diary!



We are also very concerned about the deteriorating state of the Bandstand and have proposals for the replacement of the wooden panels, which we hope to get the Council to agree to, and implement next year.

Next **Environment Group** meetings:
12 January, 16 March and 11 May 2011

NEWS FROM THE LAND YEO FRIENDS

A Progress Report from David Robinson (Chairman LYF)

The last twelve months have been a busy time for us in the Land Yeo Friends (LYF). On Wednesday 15 September 2009 five members went a long way in clearing the ex-travellers' site at Court Lane, Clevedon. We took away three trailer loads of assorted rubbish.

The group also drew the attention of the Environment Agency (EA) to the danger of flooding in the centre of Clevedon due to the build up of rubbish and silt in the culvert under Queen's Square. Photographs taken by LYF members finally convinced the EA to survey the culvert in the latter half of last year but they found that they were unable to do a complete survey as the culvert was

blocked solid with items as large as scaffold planks and beer barrels.

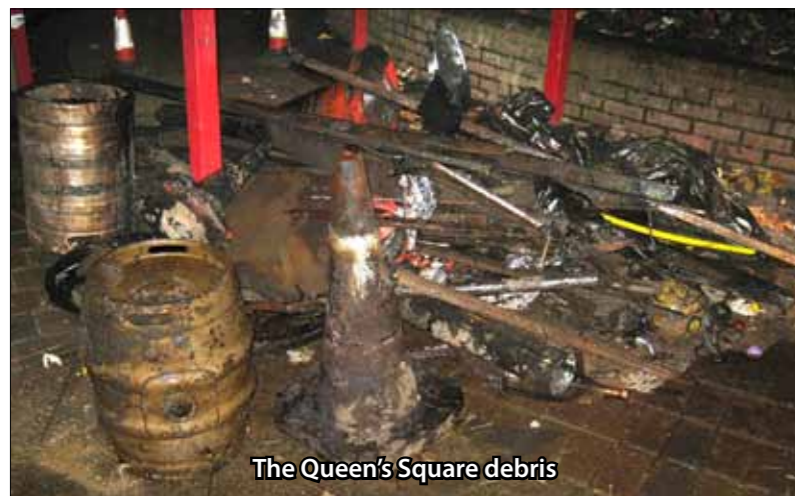
Finally, due to persistence by LYF members, contractors were engaged to clear the culvert. The work was done at the end of November 2009, taking five nights to complete and resulting in several lorry loads of debris to be carted away. The Land Yeo now flows more freely and cleanly, and the flood risk to the town is considerably reduced.

A plan to provide a pathway beside the river behind Westbourne Crescent was initiated by LYF member, Frank Jacobs, after seeing

school children struggling along the muddy path.

Funding was obtained from YANSEC and The Smisson Foundation Donation Fund. The work was carried out in July 2010 by North Somerset Council Works Department.

Feedback from residents has been encouraging and local people are delighted with the new path.



The Queen's Square debris

NOTICE BOARD

Next **Civic Society** meetings:

- 13 January - NIGEL COOMBES
Bristol Channel Steamers
- 10 February - Mr J DICKER
Keeping Woodland Alive
- 10 March - Prof. CHRIS HOLLOWAY
Life of a Limey in the US Army
- 14 April - DAVID CLARK
Heritage Protection in Mendip
- 12 May - SUE HAGGO
Nursing in Afghanistan

Note:

All members of the Civic Society are welcome to attend our Group Meetings. Please contact the group chairmen for the location of the meeting places.

Next **History Group** meetings:

- 20 January - ROY GIRLING
Normans & Saxons & Such
- 17 February - JANE DeGRUNCY
The Poor Law
- 17 March - Prof. JUNE HANNAM
Suffragettes of Bristol & Bath
- 21 April - ANNE BOWERING
The Gibbs of Tynesfield
- 19 May - Prof. SIMON HASLETT
Somerset Tsunami

Subscription Reminder:

Please remember that subscriptions of £15 per member are due on 1st January 2011. Payments please to the Membership Secretaries: John and Helen Bussell, at 33 Tennyson Ave, Clevedon, BS21 7UJ - or at the meeting.

Note:

The Civic Society AGM will be held as part of the public meeting on 12 May 2011

Trip to the National Archives:

This trip will be with the Weston Family History Society and will be on 8th March 2011. Names will be taken at the January meeting. Cost £15.

Trip to Kew Gardens on 28th April 2011:

Anyone interested in this trip should contact Wendy Moore. The cost, which includes entry to the Gardens, will be £26. Lunch can be arranged if required. Payment must be made by 17th March 2011

Civic Society Executive Members

- Chairman - Rob Campbell
- Vice Chairman - Hugh Stebbing
- Secretary - Wendy Moore
- Treasurer - Iris Wheatley
- Membership - John & Helen Bussell
- Local Government Representative - Carole Wring
- History Group - Rob Campbell
- Environment Group - Bob Hardcastle

- Conservation & Planning Group - Bryan Osborne
- Footpaths Group - Jean Hannaford
- Publicity/Newsletter - Geoff Hale
- Newsletter Distribution - Dave Long
- Web Master - Mike Wheatley

Next **Executive Group** meetings:

Tuesdays 18 January and 15 March 2011

Should any member have a point to put forward it is always possible to contact an Executive Group member to have it brought up at a meeting.



If you have any interesting information concerning the Civic Society or aspects of our work in Clevedon please send it in. We are always pleased to get contributions from our members.

Your photographs, from both digital and film cameras, will be most welcome. Please send copy for the Spring 2011 edition by: 17 April

Extracts from the report to the AGM on 4th May 1971

The Highlight of a meeting of members at the Community Hall on September 22nd, 1970 to receive reports on the progress to date was the showing of the 36 colour slides of Clevedon taken from the air by our friend from Bristol University, Mr S. Sharp. Over 100 members and friends attended and 36 new members were recruited.

A cheese and wine party held on 29th January 1971 was a great social success with an attendance of over 160. The film "Clevedon Festival, 1970" and two vintage films of Clevedon were shown.

The thanks of the Society are due to the many members who have given so generously of their time and skills. As Dr. Bracey said at the inaugural meeting: "One of the first jobs we have to do is to educate ourselves".

Thanks are due to those who have helped with publicity, shops and business houses and particularly the North Somerset Mercury.

Looking back over the year it is obvious that the Society has been established on a firm foundation. From Footpaths to Local planning applications and from Nature Conservation to future Town Planning, all aspects of the life of the Town are being probed in the interest of the Town and the people who live in it.

The year has proved that there is a need for the Society and its real value will be shown as the years advance.

Newsletter Editor

Geoff Hale
185 Old Church Road, Clevedon
Telephone: 01275 873974
email: geoff.hale1@btinternet.com

In September Mike Hooper, a Bristolian born and bred, gave us a talk about Broadmead before the modern shops were built.

With the aid of some carefully chosen photographs of the area taken before, during and after WW2, Mike took us on a journey starting in Castle Street, where the main pre-war shopping centre was, travelling down Union Street past the Odeon building and then along Broadmead itself. Finally he showed us the development in and around the Horse Fair including the building of the prestigious Lewis's and Jones's shops.

Some of his photographs were taken before the war, others just after the massive air raids that devastated the Castle area and later pictures showed the first development of the post-war Broadmead.

It was obvious that many in the audience were old enough to remember these buildings, for throughout the evening murmurings could be heard as first one then another person would recognise a long forgotten building and, who knows, relive a private memory associated with it!



Union Street

Geoff Hale (9 September 2010)

Marianne North - The Remarkable Victorian Artist

Presented by Gina Merrett Smith

For our October meeting we heard from Gina Merrett Smith who had chanced upon the work of Marianne North, the Victorian

botanical painter, while visiting the Rococo Garden in Painswick, and felt instantly drawn to the artist.

In her talk, we were treated to a wonderful selection of slides depicting Marianne North's superbly detailed and vibrantly coloured oil paintings of flowering plants, accompanied by readings of extracts from her journals describing her various journeys and adventures abroad.

Marianne was largely self-taught in painting and at the age of 41, after the death of her father, she used her inheritance and colonial connections to travel extensively in search of botanical subjects.

Her painting expeditions began in 1871 and were to span the next 13 years, taking her all over the world. Travelling and painting became



an obsession. In 1879 she donated 832 of her paintings – most of her work – to Kew Gardens and had a special gallery built to house them. The North Gallery, now a grade II listed building, has recently been refurbished and the paintings restored.

Angela Slotte (14 October 2010)

Bristol Zoo

Presented by Don Packham

Don Packham worked at the Bristol Zoo for 50 years, first as a penguin keeper and later as the head keeper. Now retired, Don had plenty of colourful memories to share during our November meeting.

Using many photographs he had taken himself Don told of the many endangered species which the Zoo is

in the business of saving. Under his stewardship, Bristol Zoo has bred 28 Persian Leopards and has been involved in breeding Asian Lions of which there are only 400 left in the world. Bristol was the first zoo in the UK to house a pair of Okapi and Don was their first keeper.

Don also told us of the lighter times, like the occasion when a seal escaped and stood in the road outside the Zoo to the consternation of the passing motorists, and of the annual walk with the elephants, Wendy and Christina, to the weighbridge, where a nearby cake shop owner would lay out a table of her wares to entertain the delighted creatures.

It was particularly interesting to hear Don finally putting the record straight regarding the premature death of Alfred

the Gorilla in 1948: apparently he didn't die of fright because of the Brabazon aeroplane flying overhead as the newspapers had suggested, but of TB. His body was preserved and now resides in the Bristol Museum – preserving happy memories for us all.

Geoff Hale (11 November 2010)



Okapi



Report by Barbara Connell

The Battle of the Somme commenced on the 1st July 1916 and was one of the largest battles of the First World War. By the time fighting had ended in late autumn 1916 more than 1.5 million casualties had been suffered by the forces involved, making it one of the bloodiest military operations ever recorded.

Last year, fourteen Civic Society members toured back to the many memorials in the region, as Barbara reports.

On our first morning we set off with John, our guide, to the Newfoundland Memorial Park which covers 84 acres of battlefield. The grass-covered terrain of craters and trenches betrays the days of turmoil. Walking through a winding trench was very atmospheric.

Situated at Sheffield Park is the unusual red brick memorial to the Accrington Pals and a plaque dedicated to the Barnsley Pals. John found a bullet, which he inspected, and then he preceded to remove the cordite - which resembled lengths of fine yellow string.

The Ulster Tower has a memorial chapel on the ground floor. On 1st July 1916 the Ulsters took five lines of German Trenches but were unsupported and fourteen hours later they were back where they started.

At Thiepval the names of 73,000 men who have no known graves are listed. In Courcellette Civil Cemetery we found a grave dedicated to Frank A. Haywood who was employed as a gardener by the Imperial War Graves Commission.



Thiepval Memorial

The South African War Memorial and Museum at Deville Wood is particularly imposing. In the museum are bas-reliefs showing the bitter struggle for the woods in 1916 and windows engraved with battlefield scenes. The memorial arch bears statues of Castor and Pollux; below is the inscription 'Their ideal is our legacy. Their sacrifice our inspiration'.

Day two started with a visit to the Somme Trench Museum housed in subterranean tunnels beneath the basilica, which was a ruin at the end of the war. There are

showcases containing armaments, the troops' personal belongings, shell art and realistic scenes of trench life of the British, French and Germans. The exit opens into the arboretum and gardens. I caused some merriment by getting locked in the loo! I was greeted with a rendition of "Two Old Ladies..."

The most thought provoking part of the trip was the visit to Lochnagar Crater. This was bought in 1978 by Richard Dunning so that the crater and the surrounding area could remain a permanent memorial to those who perished in the cataclysmic explosion.



We concluded our tour at the Devon Cemetery where Rob gave a vote of thanks to John – he really was an excellent guide and his input was much appreciated by us all.

On Friday we were on our own! We visited Arras where Hugh, our very capable driver, found the grave of his grandfather. Finally we went to the Canadian Memorial at Vimy Ridge.



Somme Trench Museum

The mood at our table for our last meal was happy as the fourteen of us discussed the memories we had of our trip. Our return journey on Saturday via the shuttle was quick and hassle free. We all felt the trip was a great experience and one we would not have missed. Thanks to all who organized, arranged and participated!

Barbara Connell



At Thiepval Memorial

CIVIC SOCIETY PROJECTS

1970 to 2010
See key on page 10



1



2



3



7



4



5



6



13



8



9



10



12



14



11

Anniversary
40 Clevedon
Civic
Society

Pictures by Geoff Hale

**To Preserve the Best
and Improve the Rest**

A TOWN COUNCILLOR'S MONTH

In 1989 Carole was elected for a 4 year term as a Conservative councillor on the Town Council. She subsequently stood as an Independent and has been re-elected each term since then. Carole held the position of Chairman of the Council in 2001 – 2002; she now chairs the Allotments committee as well as sitting on the Planning and the Finance & General Policy committees.

Carole plans to step down at the forthcoming elections in May 2011.

When we asked Carole to describe a typical month in the life of a Clevedon Town Councillor she chose October 2010.

by Cllr Carole Wring



This is my 'diary' for October 2010 which, apart from the visit to Ettlingen at the beginning of the month, is representative of a typical month's activities.

Monday, 27 September: Allotments Committee – as Chairman it is important that I am aware and familiar with the Agenda and background information.

Tuesday, 28 September: Transition Clevedon meeting in Council offices – gave apologies, as preparing for trip to Ettlingen.

Wednesday, 29 September: 2.30pm regular monthly meeting of Senior Citizens' Forum of which I am President, and currently acting Chairman.

6pm Informal Planning meeting with North Somerset Council officer to discuss and define 'Open Spaces' in the town, followed by normal Planning Committee at 7.30 pm.

Thursday, 30 September: 5.45am: Arrive Bristol International Airport for the early flight to Amsterdam, then via

Stuttgart to Ettlingen to take part in and represent Clevedon Town Council for the 30th Anniversary of Twinning. A very long day travelling.

Friday, 1 October: Morning: Met up with the rest of the Clevedon party who had travelled by coach. Lunch in the Brewery accompanied by a small glass of their good beer – not bad for someone who doesn't normally drink beer!

Evening 7pm: Walked to the Town Hall for a brief Reception and to make contact with our hosts. Each member of the Clevedon group was entertained to dinner 'en famille' (this arrangement came apparently because they were so impressed with our hospitality here in Clevedon when we entertained them for Sunday Lunch). Tony and I were hosted by the Lord Mayor, Gabriella Bussemayer and her husband, to a delicious traditional dinner, together with the Lord Mayor and his wife from Lobau (Ettlingen's twin from the former East Germany), one of the Epernay Councillors and his wife, and also a representative from Menfi in Sicily – Ettlingen's Italian twin. There were four languages being spoken, but we all managed to communicate somehow.

Saturday, 2 October: 9.30am: A sightseeing Tour of Ettlingen, which included an extensive tour of the Castle.

11 am: Brunch at the Kulisse Cinema in Ettlingen for a tour and reception. This cinema has recently formed links with

the Curzon and this is proving beneficial. 5pm: A service in St Martin's Church to mark the Twinning Anniversary. More importantly this also marked the 20th anniversary of re-unification of Germany. 7pm: Walk to the Stadthalle for the formal Anniversary celebration, having spent time beforehand finalising speech for the ceremony and presentation. Dinner and entertainment preceded the formal ceremony and speeches during which we were generously presented with a cheque for £2,000 for the Curzon Cinema, and, on behalf of the Chairman of Clevedon Town Council, Linda Knott and I presented gifts of Bristol Blue Glass to Ettlingen, to Epernay, and to Middlekerke.

Sunday, 3 October: Breakfast early, and then walk to the Schlossgartenhalle for the 20th Anniversary of German re-unification ceremony. This was a very moving and memorable occasion, and reminded so many of us from Clevedon just how difficult life must have been in a divided Germany where families and friends were separated for so many years.



Linda Knott Carole Wring Linda Strong in Ettlingen

Civic Society past projects as shown on pages 8 and 9

- | | |
|---|---|
| 1. Green Beach Fountain – Renovation (1990) | 8. Victoria Road Fountain – Renovation (1989) |
| 2. Victorian Shelter – Renovation (2002) | 9. Tree of Heaven Seat – Elton Road – Installation (2002) |
| 3. Pier Copse View Point – Renovation (2010) | 10. Marine Hill Fountain – Renovation (1990) |
| 4. Alexandra Road Fountain – Renovation (1992) | 11. Blue Plaque – 5 Elton Road – Installation (2003) |
| 5. Drinking Trough – Tickenham Road – Renovation (1990) | 12. Salthouse Fields Entrance – Arch Construction (2004) |
| 6. Marine Lake Corner Seat – Rebuild (2001) | 13. Alexandra Park Garden - Rose Arbour (2000) |
| 7. Sugar Lookout – Rebuild (2006) | 14. Peace Memorial Garden - Renovation (Mid 1980s) |

Monday, 4 October: Travelled by tram and train to Stuttgart to catch our flight back to Bristol via Amsterdam. Arrived back in Clevedon at 9.30pm. Another long day's travelling.

Wednesday, 6 October: 7.30pm: Full Council Meeting. Spent the afternoon going through the minutes of the previous Council and all the Committee Reports, and prepared all the background information I would need.

Monday, 11 October: 7.30pm: Allotment Tenants' Meeting. This is an annual event, and is an opportunity for tenants to voice their opinions and of course for the highlight of the evening the presentation of the Awards

Wednesday, 13 October: 7.30pm: Planning Committee and Flower Show Committee – which, for personal reasons, I was unable to attend.

Thursday, 14 October: Civic Society – excellent speaker on Bristol Zoo.

Wednesday, 20 October: 7.30pm:

Finance & General Policy Committee. There were a large number of Grant applications to read through and form an opinion on, as well as going through the draft of the revised Standing Orders which had to be finalised and ratified.

Wednesday, 27 October: 2.30pm: Senior Citizens Forum. 7.30pm: Transport & Highways Committee – this is not one of the committees that I normally sit on, but there were issues brought by the Civic Society that needed to be highlighted and I was more than happy to do this.

The final entry in Carole's diary reads:
'I have enjoyed these many years of service, found the work very interesting and hope I've made a positive contribution to the life of our lovely town.'



Planning meeting

REGENCY VILLAS

A research request from Jane Lilly

Here's a plea for help from Jane Lilly, whose current project is to trace as much information as possible about houses built in Clevedon between 1790 and 1845.



Lime Kiln Lane

My aim is to trace Clevedon's growth as a Regency resort, from the state of the village before the Enclosure of 1799, until the period just previous to the arrival of our branch railway from Yatton. To begin with, I am tracing as much information as I can about the cottages, villas and mansions built between 1790 and 1845. Rate books and the Census are a huge help with this work, and I'm gradually, road by road, tackling the task of finding out who built the houses and who lived there.

It would be enormously helpful to see the old sections of house deeds, to which many house owners have access.

Where houses have been sold by the Court Estate, I have often been able to obtain information about building dates and builders from the counterparts of the deeds, which were donated to the County Record Office by Lady Elton. But a great many deeds exist which I haven't been able to track down.

A couple of years ago, Derek and I were given the old deeds for Ashley House, in Old Street. Not only did we find that the house was built in 1833 by George Hollyman, but also that the land it stood on was part of the farm belonging to John Hollyman, and that the buildings between the Waggon and Horses and

the bottom of Lime Kiln Lane are part of a farm complex dating back to 1742. The farmyard was later developed as Parnell Road, and Staddon's barn there was the barn for that 1742 farm, owned by a Mr Barber.

Till we saw those deeds, this information was completely untraceable. Even better, when the farm buildings on the Lime Kiln Lane corner were developed, they were featured in the TV programme, *Property Ladder*, and internal views showed that the rear part of the buildings is actually the old farmhouse. The roof has been raised to allow the insertion of a second storey, using the same methods that occur in a house at 136-8 Old Street, now dated to 1500.

If you are able to help, I would be very glad to trace the history of your house from your deeds, where possible. The house building date has to fall between 1790 and 1845, though! Please ring if you are able to offer me a look at your deeds – I don't need to see the documents that relate to your own ownership of the house, just the older ones.



Staddons - Parnell Road

Jane can be contacted on 01275 794381.

WESTON PIER - OPEN

Report by Bob Hardcastle



28 July 2008



December 2009

Bob's role on the project was to act as Architectural Consultant to the owners, Kerry and Michelle Michael and their company, Grand Pier Ltd.

'The best pier in the world' is what my clients have called Weston's Grand Pier – and who would argue with that?

The new Grand Pier is certainly the biggest and newest pier building in the country and the most modern and probably the most expensive!

Re-opened at the end of October, three months later than planned, it is still a remarkable achievement. To have completed such a difficult building project in just over two years since that devastating fire in July 2008, which destroyed the previous structure, is nothing short of amazing.

It would not have been possible without the commitment and enthusiasm of brother and sister Kerry and Michelle Michael, the Grand Pier owners.

I had been their Architect for over ten years working on a number of projects including Sanders Garden World near Brent Knoll. I was also involved in some initial improvements to the Grand Pier after they bought the building in January 2008.

After the fire destroyed the building there was an urgent need to find a major architectural practice to design the new Grand Pier. I helped with the setting up of the architectural competition and with selecting the winner. This honour went to Angus Meek Architects of Bristol. My involvement continued over the detailed negotiations with the local authority to secure planning approval.

Work on the new building started in September 2009 following the earlier removal of about 400 tonnes of burnt and twisted steel from the old building. This was followed by repairs to the existing below deck structure and the installation of about 70 new piles to support the new building.

The new Grand Pier weighs about 3,000 tonnes compared with an estimated 800 tonnes for the 'old' pier. So the original piles now only support the deck and ground floor and the new building is supported on new piles.

You could take the deck and its supports away and the new building would still stand there!

So please go and have a look – it's free to go on the Grand Pier. Enjoy all the rides and amusements and then finish up with a relaxing cup of tea or coffee in the Tiffany Room. This can be found at the far end of the Pier and has wonderful views over the bay.

It has been an amazing project to have been involved in and there is still the possibility of a very tall observation tower to be built in the future to add to all the Grand Pier's attractions.

Kerry and Michelle Michael promised to get their beloved pier rebuilt and this they have done – Weston-super-Mare will always be grateful for that.

Bob Hardcastle



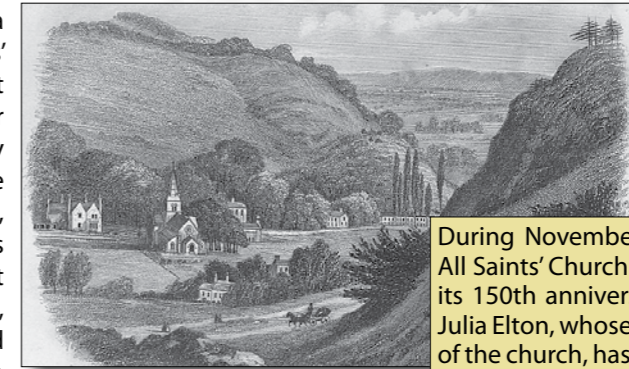
October 2010



October 2010

ALL SAINTS' CHURCH @ 150

Report by Julia Elton



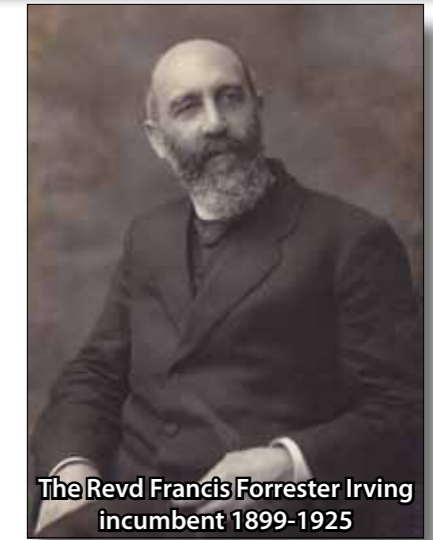
During November 2010 the congregation of All Saints' Church in East Clevedon celebrated its 150th anniversary. Civic Society president Julia Elton, whose family financed the building of the church, has been delving into its history.

All Saints' was built by Dame Rhoda Elton and consecrated on All Saints' Day, 1st November 1860. The church cost £2500 to build and she paid for it with her own money. She came from the wealthy Willis family of the Isle of Wight and the family of her first husband, James Baird, founded a successful firm of engineers and iron manufacturers working in St Petersburg. Sir Arthur Elton, 7th baronet, her second husband, gave the land and paid for the vicarage and between them they endowed the living. The only church in the lower town in those days was St Andrew's, remotely situated at the other end of the town. It has always been said that Dame Rhoda wanted to save the people of East Clevedon, many of whom would have been tenants or employees of the family, the long and arduous walk on Sundays. According to the Bristol Times for 3rd November 1860, the building was originally known as Lady Elton's Chapel, so this seems a credible claim.

church acquired more glass and fittings. In 1876 a fine brass lectern was given and in 1877 the rose window at the west end was filled with stained glass. At some point a slender wrought-iron screen in the chancel arch appeared.

The church was always on the catholic end of the Anglican spectrum, a position confirmed by the first incumbent, the learned Stephen Henry Saxby FRS, who was also a world authority on astronomy.

Saxby was succeeded in 1886 by the disastrous Revd John Vicars Foote. A difficult and irascible man, he sued his curate, who was supported by the Eltons. When he lost the case he promptly sued the Eltons, his patrons, and lost again. In November 1898, after several unhappy and controversial years, he issued the choir and church orchestra with brass knuckledusters in case of disturbances by the Kensittes, an extreme



The Revd Francis Forrester Irving incumbent 1899-1925

protestant sect. The Bishop clearly disapproved and Foote resigned the living almost immediately. His place was taken in 1899 by the legendary Father Francis Forrester Irving, who restored peace to the parish. and a fine Baptistery. However, it was his relationship with Ninian Comper from 1915 that finally transformed the building. Comper designed a new screen and magnificent reredos as well as some outstanding glass, including the Jesse window, which rank amongst the best works of ecclesiastical art in Somerset. The screen, Martyrs' window and St George window were all intended to reflect or commemorate the First World War. During his long incumbency, Father Irving fostered a strong community spirit and his legacy, both pastoral and artistic, lives on in the parish today.

Julia Elton



The Nave in 1879 showing the original screen



The Nave in about 1924, complete with Comper's reredos

The architect, C.E. Giles of Taunton and London, was, like Sir Arthur, a member of the Somerset Archaeological & Natural History Society, which was probably why he received the commission. Palmer & Green of Clevedon were contractors for the masonry and timber work while the exceptionally fine stone-carving was executed by William Bennett of Portishead. Over the next 30 years, the

All Saints' as we see it today, furnished by two of the finest late Gothic revival artists, is entirely due to Irving's inspiration. By 1903 he had replaced the original east window and commissioned an exquisite Angelus window in the Lady Chapel, both designed by Charles Eamer Kempe. He also lengthened the Sanctuary, built new chapels



Anniversary celebrations

MILITARY CHEST

Researched by Rob Campbell

Alfred Bond Trestrail was born on 5 February 1849 at Mitcham Common, Surrey, and was educated at Mill Hill and Amersham Hall Schools. Later he attended the Royal College of Chemistry and the Royal School of Mines. By 1885 Trestrail was a resident of Clevedon, living in Albert Road, and was gazetted as a Lieutenant in the 1st Gloucestershire Volunteer Artillery.

He joined the No. 9 Battery, 1st Gloucestershire (Gloucester & Somerset) Artillery Volunteer Corps in Clevedon, which had been raised in 1860 by Sir Arthur Hallam Elton of Clevedon Court; the unit was also known as the 1st Somerset or Clevedon Artillery Volunteers. They manned two 64 pounder guns mounted on Wain's Hill and from there used to shoot at a target moored in the bay. Their Drill Hall, built in 1863, was in Albert Road, only a few minutes' walk from the Trestrail residence. Nearby was a carbine range. In 1883 the command of the unit was taken over by Captain Sir Edmund Harry Elton, Bart. On 27 November 1891 Trestrail was gazetted Captain and officially took over command of No. 9 Battery. In 1900 he was made Hon. Major and on the 12 September 1905 received the Volunteer Decoration.

As well as in his business and military duties Major Trestrail was a very active man in public life. He was a fellow of the Royal Geographical Society, a member of the Geological Association, the Hon. Secretary of the Royal Society for the Prevention of



Cruelty to Animals (Clevedon District), a member of the Clevedon District Council, Vice President of the Weston-super-Mare Division of the Liberal Association and a Justice of the Peace. At an age when many men retire he became Commandant of the Clevedon Ladies Voluntary Aid Detachment and served throughout the Great War as Commandant of the V.A.D Red Cross Hospital, Oakland's, here in Clevedon. It was for these later services that he was created a Member of the British Empire in the New Year Honours of 1919.



MBE Decoration

Volunteer Decoration

COLLECTORS' LOT

From the Dave Long Collection

Percy J. Bartlett was a Chemist at No. 1 Selwood House, The Triangle c.1900-1909.

As far as I know this bottle is the only item that has been found with Percy Bartlett's inscription. It is a baby's feeding bottle that was used for a short time. It had an internal-screw glass or porcelain stopper through which a rubber tube passed down into the bottle to a syphon tube. At the other end of the tube a teat was attached.

The great disadvantage of this type of feeder was the rubber tube (see illustration below right), which was difficult to clean and a potential source of gastro-intestinal infection. It was found that it probably caused the deaths of more babies than it nourished. It became known by some doctors as the murder bottle.



Measurements: 5in. x 4in., or 12.5mm. x 10mm.



Photograph taken from a postcard c.1905.

BRANCH LINE

by Angela Slotte



Pine is now the most extensively planted pine in the world - over 90%, or three million acres, of New Zealand's plantation forests are of this species.

Naturally thriving in cool, foggy conditions, the Monterey Pine is at home in the South West of England and, being salt and wind tolerant - although somewhat frost tender - provides an effective barrier against sea winds. In exposed localities, it develops a wind-swept, picturesque shape.

The majestic Monterey Pine standing at the junction of Princes and Linden Roads must be among Clevedon's best known landmark trees. It received a Tree Protection Order in August 1980 and the last work done on it was the lopping of the lowest branch overhanging the road junction, following North Somerset Council consent in September 1981.

The first Monterey Pine (*Pinus radiata*) was brought to Britain from the central Californian coast in 1833 by botanist and plant collector David Douglas. Because of its rapid growth and excellent timber and pulp qualities, the following decades saw this pine widely planted around the world in areas with a Mediterranean climate. The Monterey

Thirty-one Monterey Pines, planted in the mid 1980s as part of a shelter belt, can be seen along Clevedon's Blind Yeo riverbank near Yeolands Drive. The tallest are now approaching 40 feet.

Young trees can grow up to 6 feet a year. Mature trees may reach their full height of 120 feet in 40 years or so and have an average life span of 80 to 90 years.

The Monterey Pine has needles grouped in threes, but perhaps its most fascinating feature is its cones. It is

one of a very small group of so-called 'closed-cone pines' in which the mature female cones remain sealed with resin and attached to the branches, often for many years, only to open in conditions of extreme heat. This is thought to be an adaption to forest fires in its native habitat, where the fires' heat sweeping through the crowns of the trees causes the resin seal to melt, allowing the cones to open and the dispersed seed to recolonise the burnt site.

One hot day last June I was exploring the southern coastal path in Cornwall when I came across the remains of some Monterey Pines recently felled by the National Trust. I was intrigued by the faint but distinct cracking sounds as the now totally exposed mature cones split open in the scorching sunshine.



Cracking the mystery of the disappearing Willows - a response to Old Crotchety's 'moan' in the previous edition

According to North Somerset Tree Officer Ian Monger the two crack willows in Kenn Road were removed because they fell into the top priority tree category of ... *dead, dying or dangerous* ... or *obstructing the highway*. Mr Monger adds, "Willow is a brittle wood at the best of times. A large dead or dying willow next to a busy highway would always be removed. The willow stumps were removed as they would have resprouted in a way likely to lead to further failures if left to grow."

The vanishing Midland Hawthorn at Salthouse remains a mystery. Our Tree Officers have not been able to find any reference either to the tree or to recent work done on it and they can only conclude that the tree was removed by a predecessor, before they took office in 2009. But to end on a happy note, Mr Monger writes "I've found a pink Midland Hawthorn via our usual supplier and will get one planted this winter."

We'll be looking out for it!

By Angela Slotte on behalf of the Environment Group

A message from Joe Norman (Chairman, MARLENS)

MARLENS



We are enthusiasts for Clevedon Marine Lake, determined to ensure that this seafront jewel is kept in service and used for the benefit of people in Clevedon and North Somerset.

Our vision is of Clevedon Marine Lake & the adjoining Salthouse Fields as a water & waterside playground for the district - a continuously and safely available resource for schools, youth groups, clubs, families, residents & visitors.

Our main public events last year were the Aquathlon (swim and run race) on Sunday 4 July, the Marine Lake Festival over the weekend 18-19 September and the

illuminated night sail of model boats on Saturday 4 December.

North Somerset is preparing a new "Management Plan" for Clevedon sea front this year. MARLENS will lobby for our Marine Lake to be repaired and improved and try to ensure that the needs and ideas of all Marine Lake users are taken into account.

It is important for a campaigning organisation like MARLENS to have members, so if you agree with MARLENS' aims, please join us. There is a membership form on our web site:

www.marlens.org.uk/
or contact Joe Norman 01275 877180

MEMBERS' PHOTOGRAPH GALLERY



by Jusben (Derek Lilly)

Early Morning in Clevedon, taken from the motorway bridge in Court Lane with Tickenham Church just showing in the mist

Two swans on the Blind Yeo early one misty morning



More of Derek's photographs can be found at www.morguefile.com. Just type in 'Clevedon' and look for 'jusben'.

CARTOON CORNER

Tuesdays in Clevedon by Shirley Beale

